

Residential Lettings  
Property Management Specialists

PO Box 301, Upminster, Essex, RM14 9DQ  
01277 523358  
enquiries@waderesidential.com  
www.waderesidential.com

## NEW TOWER BUILDINGS, WAPPING, LONDON. E1W 2PD

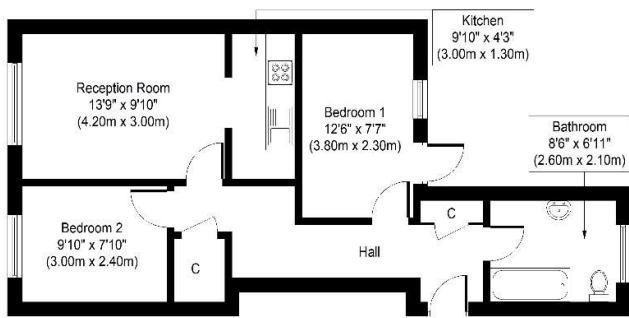


## £1,350 PCM

A SECOND FLOOR TWO BEDROOM FLAT IN A PERIOD BUILDING IN THE SOUGHT AFTER WAPPING LOCATION NOT FAR FROM THE RIVER THAMES AND WITHIN WALKING DISTANCE OF WAPPING STATION. WOULD SUIT A PROFESSIONAL COUPLE OR TWO SHARERS. EPC RATING D.

- TWO BEDROOMS
- OPEN PLAN LOUNGE/KITCHEN AREA
- BATHROOM/WC
- GAS CENTRAL HEATING
- COMMUNAL GARDEN
- SOUGHT AFTER LOCATION
- PERIOD BUILDING
- VIEWING RECOMMENDED





Approximate Floor Area  
 556 Sq. ft.  
 (51.7 Sq. m.)

Whilst every attempt has been made to ensure the accuracy of the floor plan contained here, measurements of doors, windows, rooms and any other items are approximate and no responsibility is taken for any error, omission, or mis-statement. This plan is for illustrative purposes only and should be used as such by any prospective purchaser or tenant. The services, systems and appliances shown have not been tested and no guarantee as to their operability or efficiency can be given.

Copyright V360 Ltd 2021 | www.houseviz.com

